



DESCRIPTION

Trend Q is a series of terrazzo-like engineered stone tiles and slabs that include numerous colors with recycled glass content. The material is composed of approximately 93% “grit” or chips and 7% pigmented polyester resin. The grit, which is comprised of either quartz, granite, glass, or mosaic, is crushed into nine different granule sizes. These granules are mixed with the pigmented polyester resin and spread on a large sheet mold where the slab takes its shape. After finishing the surface to a high polish, the slab is fitted with a mesh backing and is either left intact or cut into tiles.

COLORS + FINISHES

There are 49 colors in the Trend Q standard color line. Due to the nature of the product, finishes vary from color to color but typically range from a high-polish to a semi-polished surface.

SIZES

Standard nominal (and actual) sizes are: 12"x12" (11.75"x11.75"), 24"x24" (23.5"x23.5"), and 16"x47" (15.75"x47.25").

RECYCLED CONTENT

In response to the evolving global perspective towards environmentally friendly construction, many new and re-mastered colors in Trend Q contain measured amounts of either post-consumer or post-industrial recycled materials.

Fifteen colors contain various percentages of post-consumer recycled content, and twenty contain 70% post-industrial recycled material. Fourteen colors are made by more traditional means. The percentage of recycled content for each color is noted in the product captions.

APPLICATIONS

Trend Q is highly durable, easy to maintain, stain resistant and slip resistant (based on ASTM C1028 test results). Tiles are suitable for interior and exterior walls and floors, including heavy-traffic commercial flooring applications.

INSTALLATION + MAINTENANCE

Tiles can be installed using standard installation methods for thinset adhesives. Use high quality adhesive and grout from manufacturers such as Laticrete and Mapei, following manufacturers' recommendations, depending on conditions. Clean with a neutral detergent when needed.

STONE SOURCE

NEW YORK	212.979.6400	NEW JERSEY	201.549.7400
BOSTON	617.666.7900	PHILADELPHIA	215.482.3000
CHICAGO	312.335.9900	WASHINGTON, DC	202.265.5900
LOS ANGELES	213.880.1155		

STONESOURCE.COM

TREND Q

PRODUCT SHEET



607 - 0%



503 - 0%



655 - 33%



431 - 70%



504 - 0%



616 - 0%



617 - 0%



482 - 71%



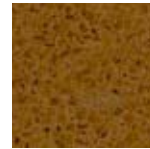
642 - 0%



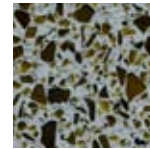
536 - 45%



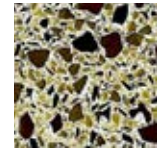
485 - 71%



484 - 70%



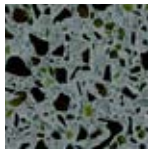
667 - 45%



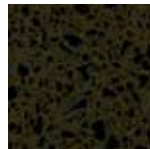
537 - 72%



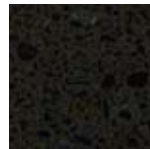
662 - 0%



665 - 53%



663 - 72%



664 - 65%



666 - 69%



650 - 0%



550 - 0%



660 - 0%



634 - 0%



659 - 42%



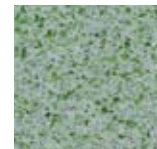
630 - 0%



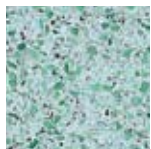
646 - 56%



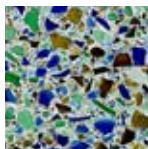
657 - 72%



681 - 55%



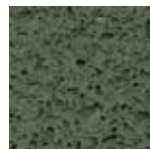
538 - 72%



464 - 72%



456 - 54%



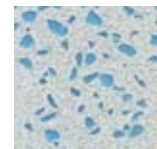
480 - 72%



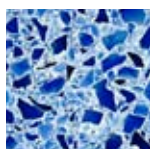
668 - 72%



631 - 0%



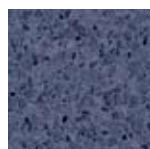
512 - 0%



481 - 72%



439 - 70%



483 - 71%



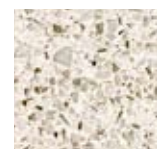
461 - 58%



453 - 60%



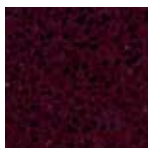
451 - 58%



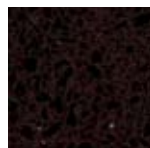
486 - 70%



465 - 71%



487 - 70%



669 - 72%



462 - 72%



407 - 71%



422 - 71%



460 - 57%

NOTE: percentages indicate amount of recycled content.

STONE SOURCE

NEW YORK 212.979.6400 NEW JERSEY 201.549.7400
 BOSTON 617.666.7900 PHILADELPHIA 215.482.3000
 CHICAGO 312.335.9900 WASHINGTON, DC 202.265.5900
 LOS ANGELES 213.880.1155

STONESOURCE.COM