

PATRICIA URQUIOLA

For Patricia Urquiola, the challenge was clear: "I needed a really tactile material, which did not pretend to be anything else." The *Interior Design* Hall of Famer found just that in Tierras, a two-pronged assortment for Italian tile specialist **Mutina**. The Industrial segment includes Frame, screen-printed with geometric patterns, and Triomix, a dimensional

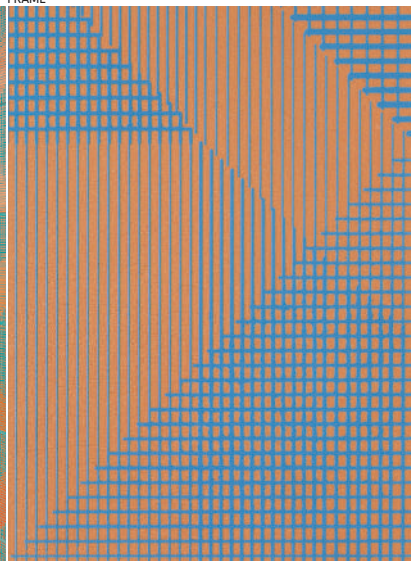
graphic. For each, eight varieties of lava, terra-cotta, and clay are mixed and deposited on a base of recycled ceramic. The Artisanal category reinterprets traditional roof tiles and bricks through extruded terra-cotta, with 3-D varieties like Roman, referencing ancient numerals. For both groups, choose from a variety of sizes and shapes as well as coordinated trims. Through Stone Source. stonesource.com. **circle 406** ➔



tile maven



FRAME



interiordesign.net/tierras15

for a video of editor in chief Cindy Allen interviewing Urquiola